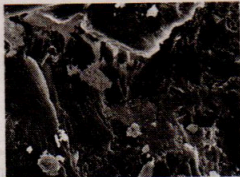

● **Anya Gallaccio; Lily Hunter Green** Aldeburgh

Anya Gallaccio's huge black-and-white photos at the SNAP festival (work pictured), seem to depict scarred landscapes, far below. Dark chasms are cut in the earth and grey mushroom clouds apparently bloom willy-nilly in work that is made up of magnified images from nearby Orford



Ness, a mysterious spit of shifting shingle on the Suffolk coast that was a cold war military test site and is now a nature

reserve. The festival's other commission strikes a gentler note. Sound artist Lily Hunter Green's piano sits on a lawn and houses videos of a nearby beehive, its denizens' buzzing music playing as you pass. **ss**

*Snape Maltings Concert Hall and lawn,
Sat to 29 Jun*
